

LASERLYTE

Laser Accuracy to 4" at 100 yds.

www.laserlyte.com

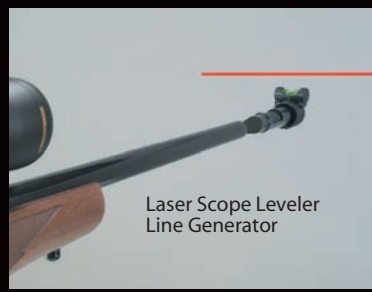


# UNIVERSAL LASER BORE SIGHTER—DELUXE KIT

**.22 to .50 Caliber Laser Bore Sighter**  
The Deluxe Laser Bore Sighting Kit features a 650nm laser module that projects a beam on the target, to allow bore sighting accuracy of any firearm, from .22 to .50 caliber (4" minimum barrel required).

**Laser Gun/Scope Leveler**  
The Laser Gun/Scope Leveler allows you to first level your gun with the integrated adapting rail, then allows you to accurately level your cross hairs with the line generating lens and bubble level.

**12 to 20 Gauge Shotgun Adapter (.51-.75 Caliber)**  
Also, the 12-20 gauge bore adapter allows the quick and easy sighting-in of any 12-20 gauge shotgun.



Laser Scope Leveler Line Generator



12 to 20 Gauge Shotgun Adapter

### PARTS INCLUDED

- Laser Boresighter
- Shotgun Adapter
- Gun/Scope Leveler
- 4 Adjustable Adapters
- 3 A-76/G13 Batteries

\*Includes Pouch

**DANGER**

LASER LIGHT  
AVOID DIRECT EYE EXPOSURE

POWER OUTPUT <5mw  
WAVELENGTH 630-670nm  
CLASS IIIa PRODUCT

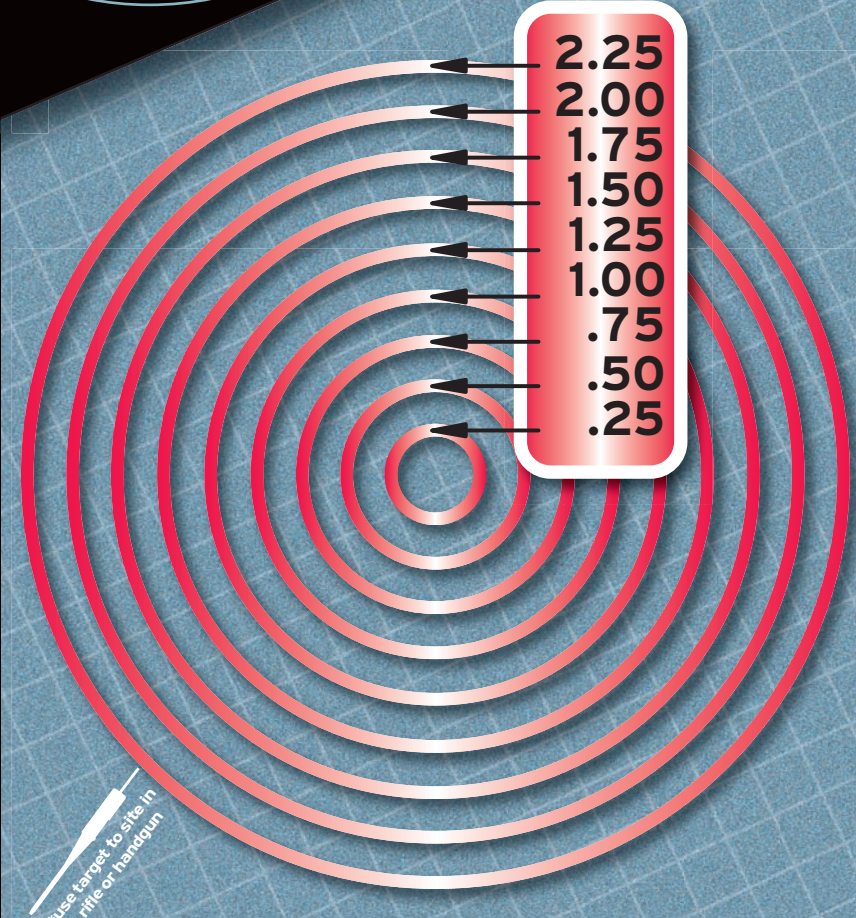
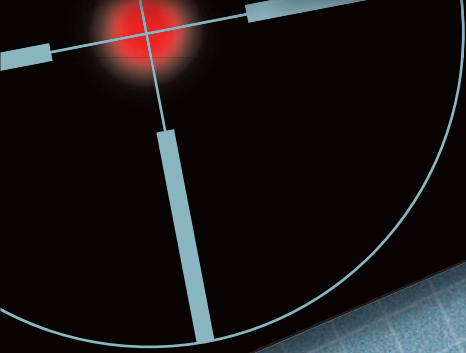


6 897064 20900 1  
LBS-DLUX-140

U.S. Patent No. 6,421,947  
Patent Pending



# UNIVERSAL LASER BORE SIGHTER—DELUXE KIT



**For Handguns, Rifles and Shotguns  
Scopes and Sights**

- .22 to .50 Caliber Laser Bore Sighter
- 12 to 20 Gauge Shotgun Adapter
- Laser Scope Leveler



www.laserlyte.com

**Comes Complete—Ready to Use**



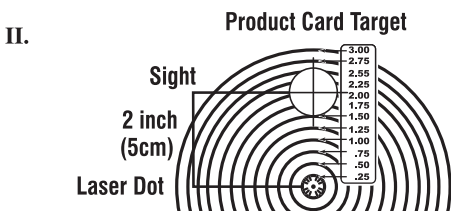
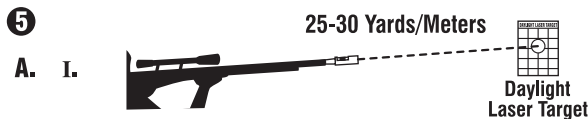
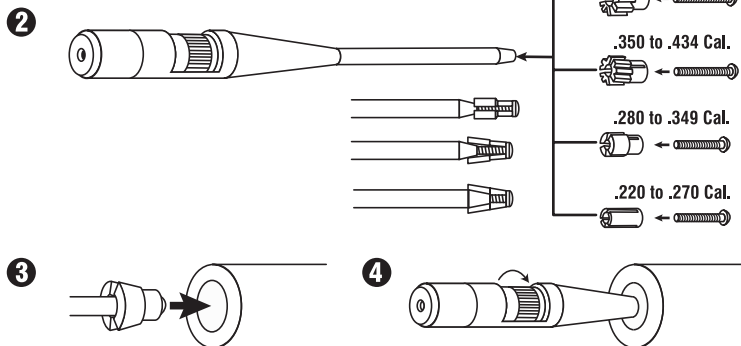
# UNIVERSAL Laser Bore Sighter-Deluxe Kit

## LBS Sight-In Steps

LBS-0006-140

- 1 **UNLOAD YOUR FIREARM!**
- 2 Find adapter to fit your barrel, thread proper screw into adapter.
- 3 Adjust adapter to fit snug inside of barrel.
- 4 Roll the switch until it comes on.
- 5 Sighting-in:
  - A. 25-30 Yards/Meters - RECOMMENDED!
    - I. Shine laser dot out 25-30 Yards/Meters
    - II. Adjust cross hairs directly on top of the dot.
  - or -----
  - B. 10 Yards/Meters (If 25-30 Yards/Meters not available)
    - I. Shine laser dot out 10 Yards/Meters
    - II. Using product card adjust cross hairs approximately 2 inches/5cm above the red dot.
- 6 **REMOVE BORE TOOL!** At firing range fire first 100 yard/meter shot. Make final adjustments.

### 1 UNLOAD YOUR FIREARM!



## Battery Replacement: (3) A76 or G13 Batteries

BAT-0G13-A76  
(12 PACK)

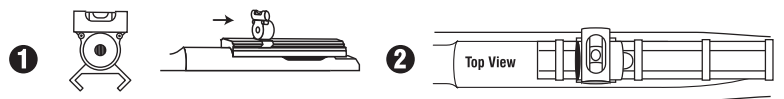
- 1 Turn the laser to the on position.
- 2 Lift up on the plastic battery cup.
- 3 Pull out and replace batteries. Insert Batteries with positive (+) going into cup.
- 4 Put battery cup back into bore tool.



## Gun Leveler

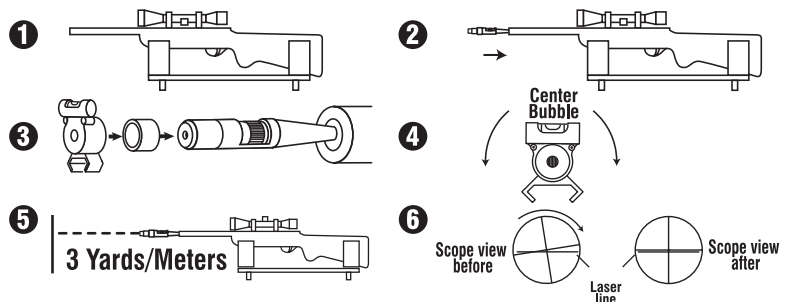
SLA-0001-140

- 1 Slide gun leveler onto top scope rail.
- 2 Use the bubble level and adjust gun so bubble is between lines. Secure gun, mount scope and follow scope leveling directions.



## Scope Leveler Adapter

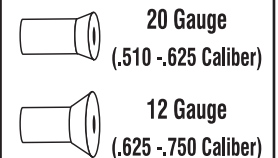
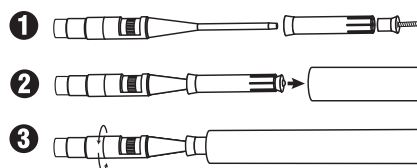
- 1 **UNLOAD FIREARM!** Secure firearm in a rest and make level.
- 2 Follow 1-3 Sight-In Steps.
- 3 Put the adapter with ring over the end of the bore tool.
- 4 Adjust bubble between the two lines.
- 5 Turn on laser and shine on wall 3 yards/meters away.
- 6 Adjust cross hairs until they are parallel with red laser line.
- 7 Tighten down scope rings, pull off scope leveler and proceed to Sight-In steps.



## Shotgun Adapter

BAK-1220-300

- 1 **UNLOAD FIREARM!** Insert bore tool into the shotgun adapter and thread into screw.
- 2 Put into shotgun barrel.
- 3 Hold shotgun adapter and twist the bore sighter until a snug fit.
- 4 Once snug follow instructions for Sight-In steps.



WARRANTY:  
One year  
limited warranty



A Division of P&L Industries  
101 Airpark Road - Cottonwood, AZ 86326  
Phone 928-649-3201 - Fax 928-649-3970  
www.LaserLyte.com